

NL2: Polder Flushing

Increasing freshwater availability along a saline Dutch coastline:

Case study Northern Groningen

Waterschap Noorderzijlvest

BlueTransition
How to make my region
climate resilient

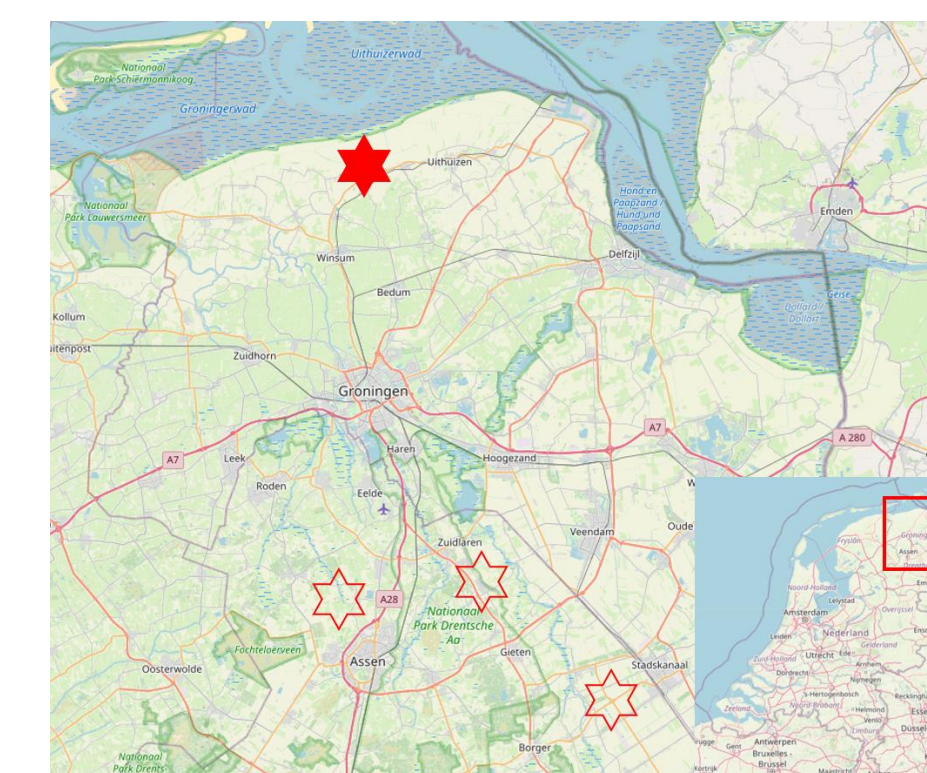
Interreg
North Sea
Co-funded by
the European Union
Blue Transition

Pilot summary

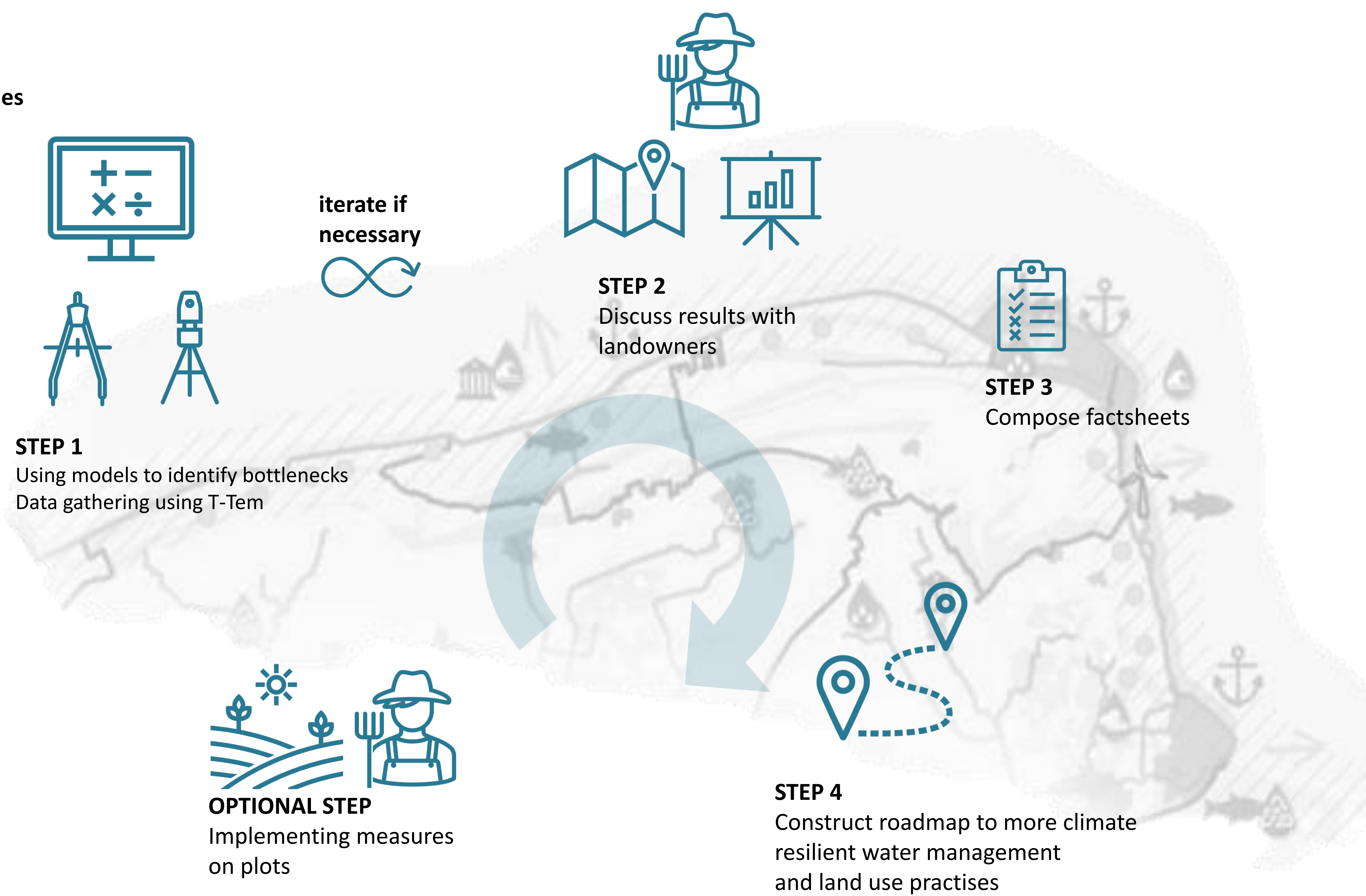
In large parts of the coastal area of The Netherlands shallow brackish and saline groundwater occurs, sometimes alternating with fresh groundwater. Because salt water from the subsoil causes salinization of the surface water, the water board flushes the waterways with freshwater in order to have sufficient water of sufficient quality available for irrigation. Waterways, weirs and small pumping stations were built for this in the 1990s. However, this systems is not optimally, and alternating measures might be effective in mitigating the effects of saline groundwater on open water.

This pilot project aims to identify both bottlenecks in the systems and solutions to these bottlenecks that are both effective and proven feasible for local landowners.

The main goal of the project is to bridge the gap between theorized solutions and their practical applicability and effectiveness for sustainable and climate-resilient land use and water management

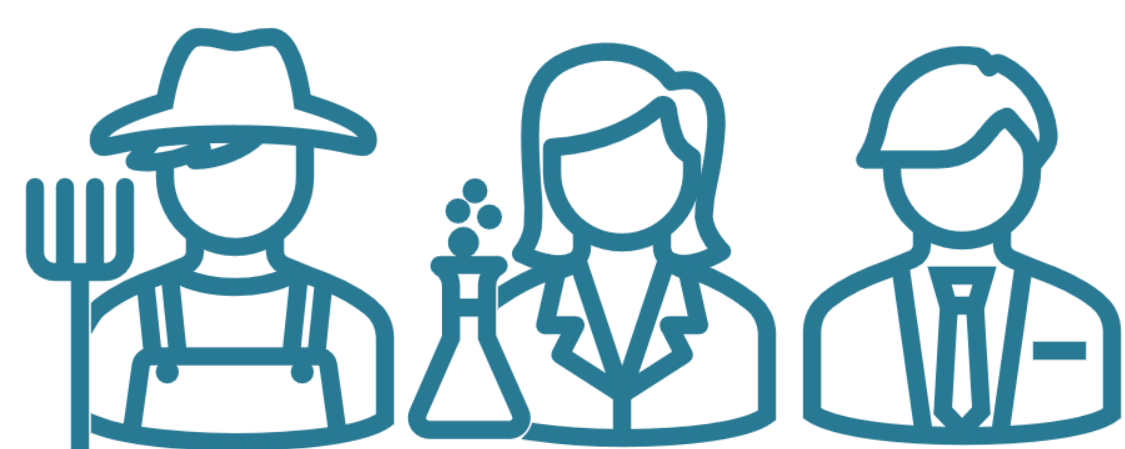


Activities



Governance

Collaborate

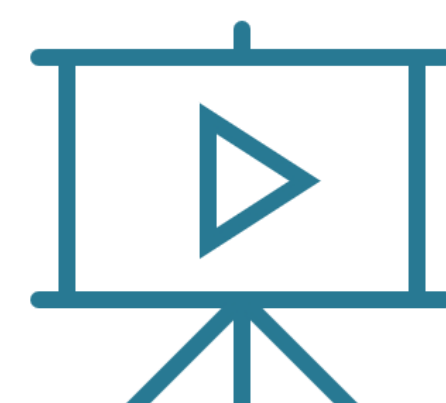


Collaboration and co-creation between landowners, research institutes, student and regional authorities

Communicate

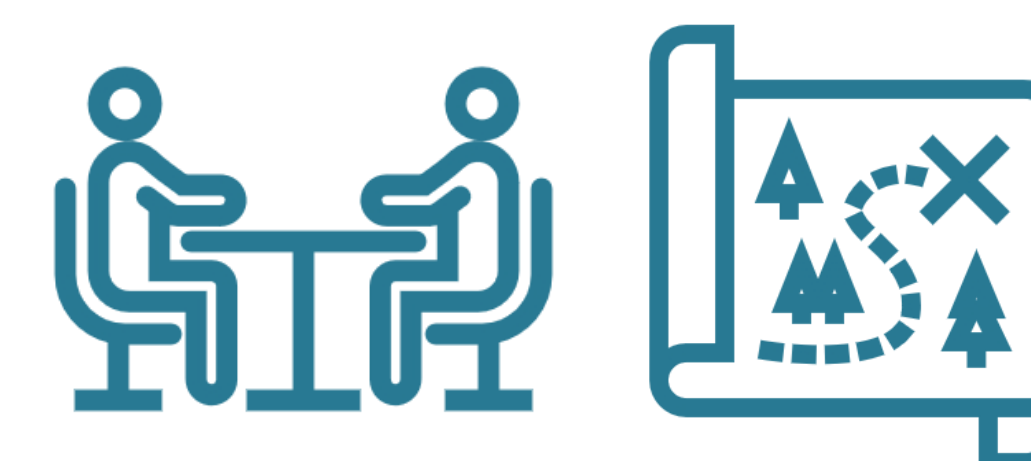


Citizens' field day



Video with pilot's results and strategy recommendations

Impact



Pilot's impact discussion



Marijn Hooghiem Niels Tienstra
Contact: m.hooghiem@noorderzijlvest.nl

Waterschap NOORDERZIJLVEST



Priority 3.0
Climate resilience
and biodiversity

