

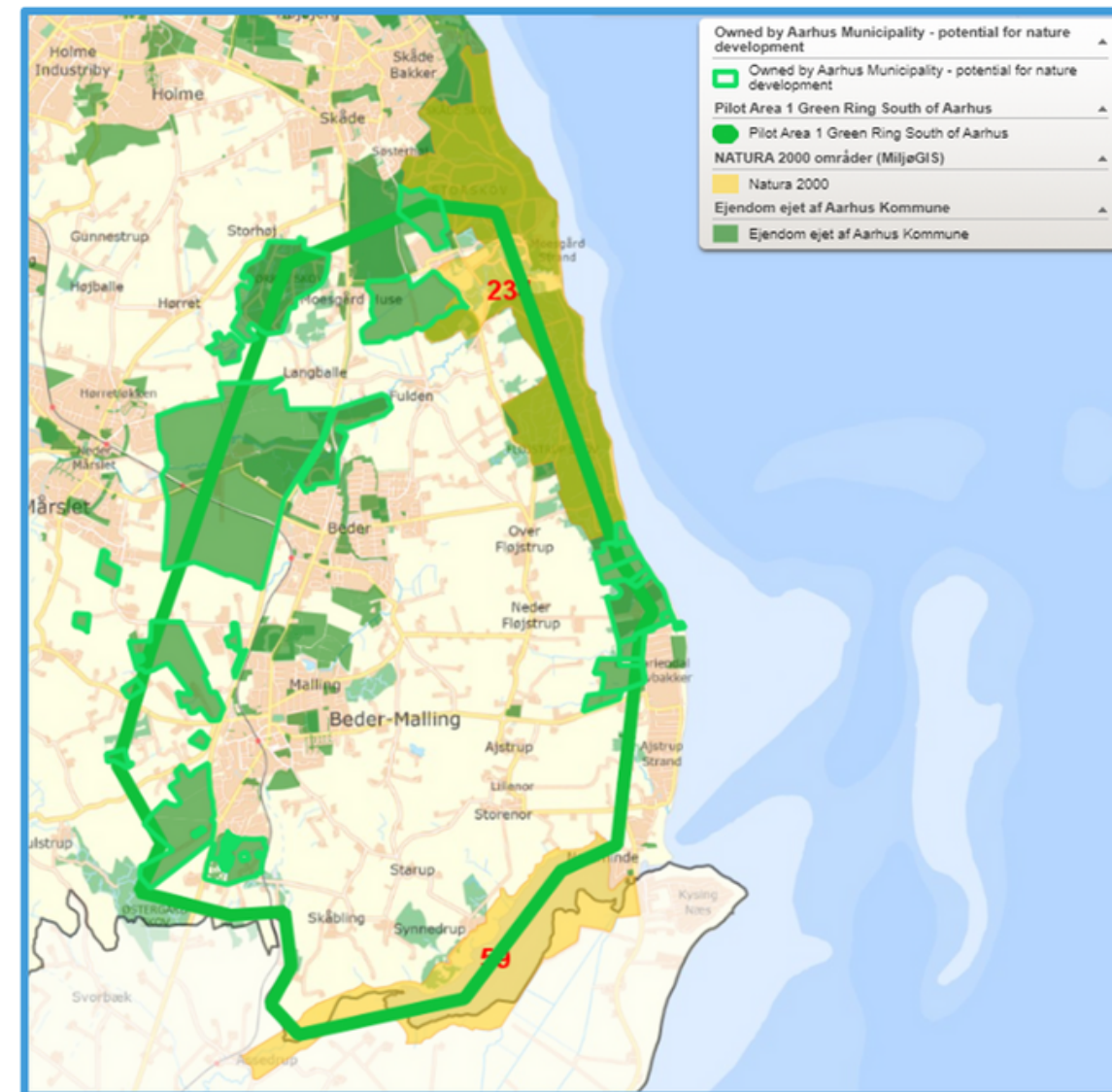


City of Aarhus



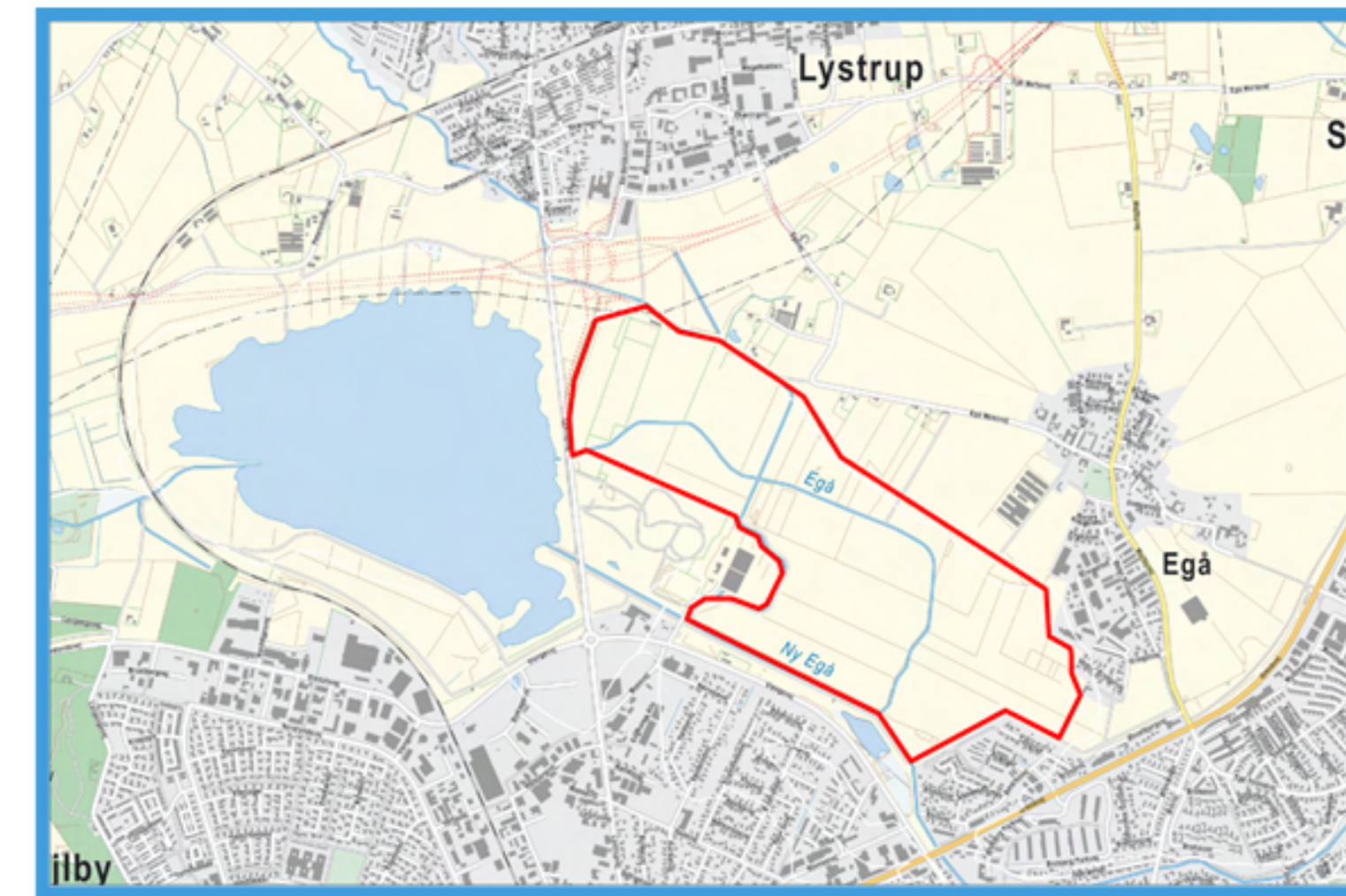
Pilot 1 Green Ring South of Aarhus

350-500 ha connecting to two NATURA 2000 areas
Aarhus Municipality owns 80-90% of the area



Pilot 2 Hede Enge

150 Ha
Aarhus Municipality owns 38 % of the area



CHALLENGES

- Decrease in biodiversity - loss of species by extinction
- Climate Change due to a rising CO2-level
- Ground water pollution



CHALLENGES

- Decrease in biodiversity - loss of species by extinction
- Climate Change due to a rising CO2-level
- Flooding of houses and infrastructure



APPROACH

- Citizen engagement and co-design of NBS at "open caravan"-sessions and public fieldwalks in The Green Ring.
- Change of land use: Conversion of 300+ ha intensive farmland to nature.
- Restauration of small lakes and wetlands, streams, forest, species rich dry grass lands ect.
- New public pathways for recreational use



APPROACH

- Involvement of private landowners and other stakeholders at early stages
- Comprehensive Hydrology Analysis of the area
- Land reparcelling process if possible
- Citizen engagement at "open caravan"-sessions and public fieldwalks.



IMPACT

- Increasing biodiversity in new habitats by creating green corridors for nature between existing habitats
- Helping pollinator species by creating 300+ ha new species rich grassland, ponds, meadows and new forest
- Boosting local populations of treefrog (*Hyla arborea*) and crested newt (*Triturus cristatus*)
- Better public health and increased access to nature



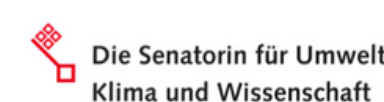
IMPACT

- Climate adaptation to avoid flooding
- Restauration of river habitats, new wetlands, dry heath land
- Very important habitat for birds – especially for migrating birds and the sea-eagle
- Change of land use: Intensive farm land to nature
- New public pathways for recreational use and better public health

interreg.eu/biodiverse-cities
[@biodiverscities](https://twitter.com/biodiverscities)



Biodiverse Cities



BIODIVERSE CITIES