

SIRR



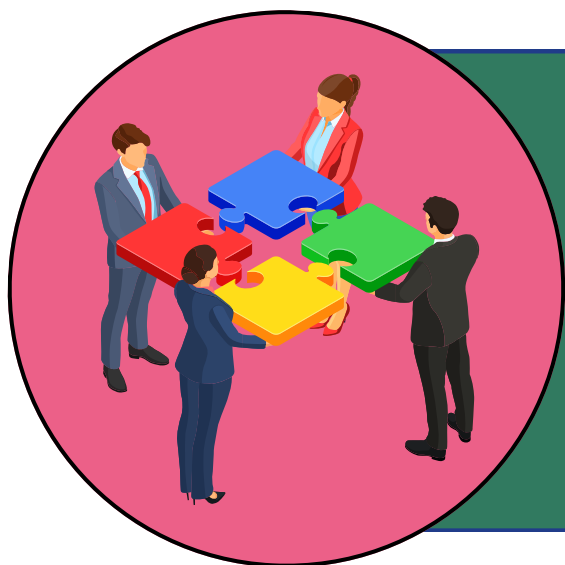
How do the hubs interpret the aims of the SIRR project?

- Increasing the involvement of civil society.
- Coming up with sustainable solutions in the social, economic, and environmental spheres.
- Developing methods and tools enabling sustainable transformation.
- Answering the question - how to use the resources that the local communities have?
- Decoding **what Multiple Helix collaboration can be** (who participates in it and how it is supposed to work).



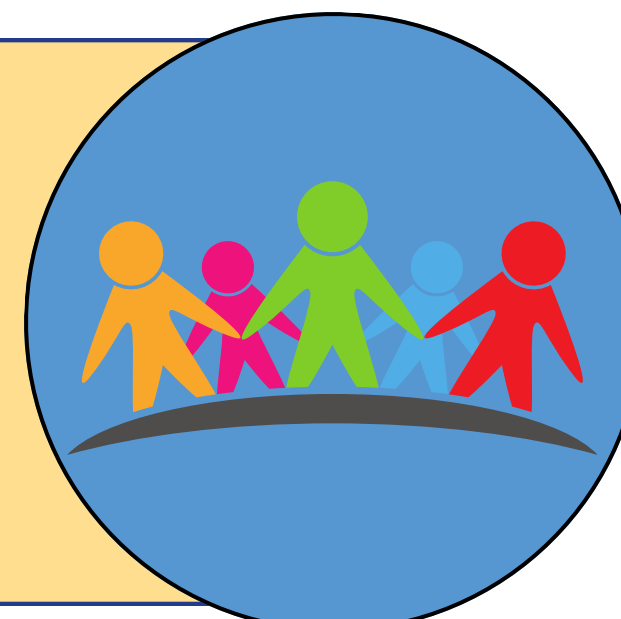
What is the nature of collaboration among the hubs?

- Greater integration: trust needs to be built; rarely does anyone take the initiative to contact other partners; the idea to create **smaller networks** inside SIRR and a Nordic Triangle.
- National level prevails: language barriers were indicated; national coordination meetings.
- The need to create a **hub-specific activity document**: what are the hubs doing at the moment; what is the area of speciality, and what kind of solutions have they implemented?; very little knowledge exchanged so far.



How do the hubs engage in collaboration with the external actors (outside SIRR)?

- Experienced hubs: academia, science park, municipality, businesses.
- Newcomer hubs: civil society, local businesses and municipality.
- Building trust requires: **offering values!**
- Not very experienced with the economic sector: AUD.
- Problems with involving small and medium-sized enterprises: TrENDi, Louvigné.
- Issues with collaborating with public authorities: Skagen, CCPL.
- Missing civil society: Sotenäs, TrENDi.
- Lacking academia: CCPL, AUD, Louvigné.



How do the hubs understand and assess their roles and participation in the project?

- Sotenäs: hub as a promotor of the green transition.
- Skagen: hub as a place where problems will be solved and innovative initiatives implemented.
- Læsø: hub as a network expander.
- TrENDi: hub as a think tank, a marketplace where ideas can meet and be developed.
- Stenvad Mosebrug: hub as an example of an innovative change.
- Lysekil: hub as a facilitator, hub should be perceived as the whole municipality.
- The French hubs: hub as a place that makes people feel more inclusive, having consultations with the citizens.

