



**Interreg
North Sea**



Co-funded by
the European Union

FREIIA



Høgskolen i Østfold



Hvaler, NO

POPULATION APX. 4,700

HVALER MUNICIPALITY

DEMOGRAPHICS: MANY PART TIME RESIDENTS, AGING PERMANENT POPULATION
TOURISM SITUATION: STRONG SUMMER TOURISM, LOW WINTER ACTIVITY
MAIN SECTORS: TOURISM, FISHING, PUBLIC SECTOR

Land area: approx. 90 km²
(archipelago municipality)

Schiermonnikoog, NL

POPULATION APX. 950

SCHIERMONNIKOOG MUNICIPALITY

DEMOGRAPHICS: VERY LOW POPULATION, FEW YOUNG PEOPLE, HIGH SHARE OF ELDERLY
TOURISM SITUATION: NATIONAL PARK, STRICTLY REGULATED, SEASONAL TOURISM
MAIN SECTORS: TOURISM, NATURE MANAGEMENT, LOCAL SERVICES

Land area: approx. 41 km²



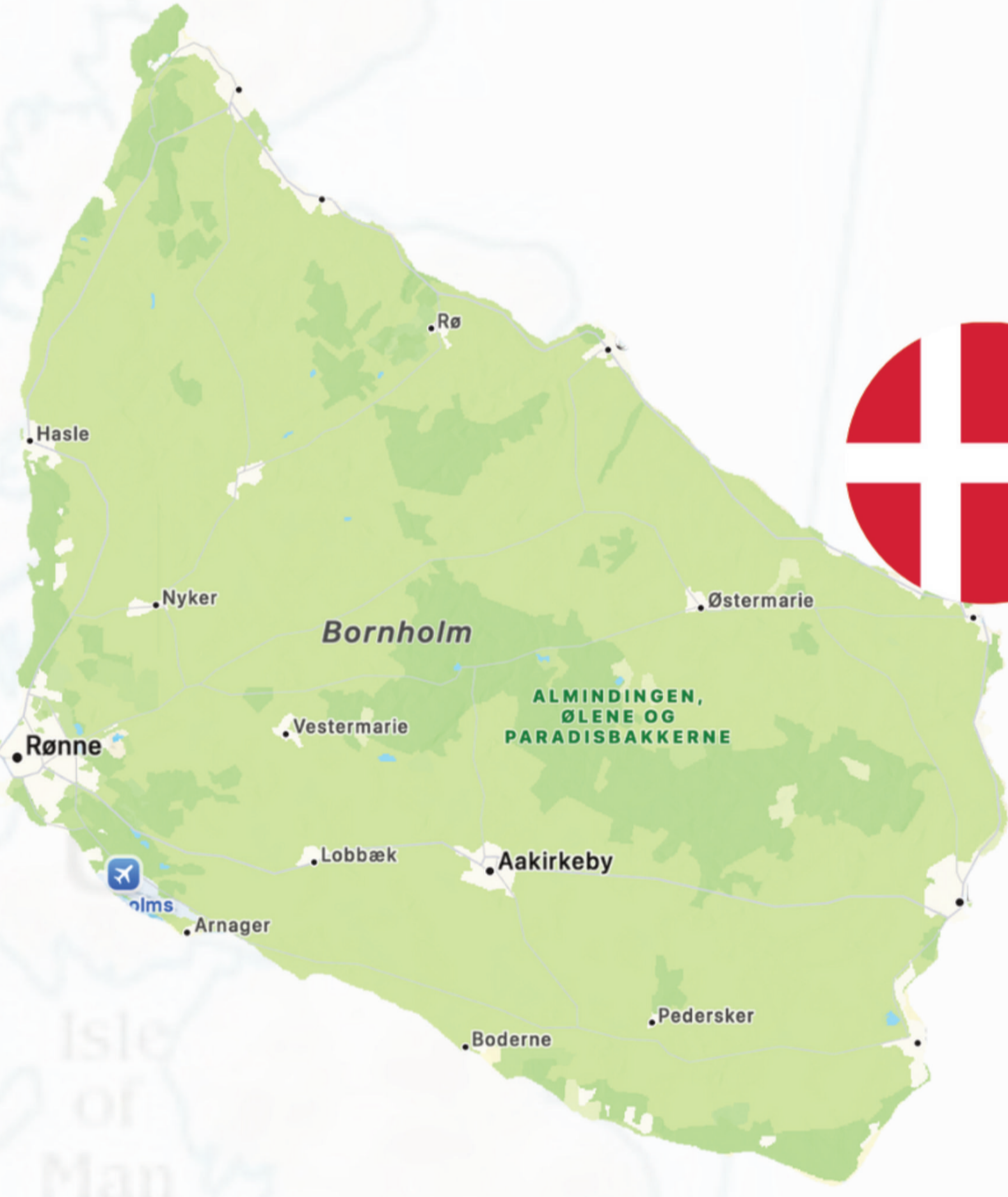
Bornholm, DK

POPULATION APX. 39,000

BORNHOLM MUNICIPALITY

DEMOGRAPHICS: MIXED POPULATION, RELATIVELY STABLE YEAR ROUND RESIDENCY
TOURISM SITUATION: HIGH SUMMER TOURISM, BUT ALSO YEAR ROUND ACTIVITIES
MAIN SECTORS: TOURISM, AGRICULTURE, RENEWABLE ENERGY

Land area: approx. 589 km²



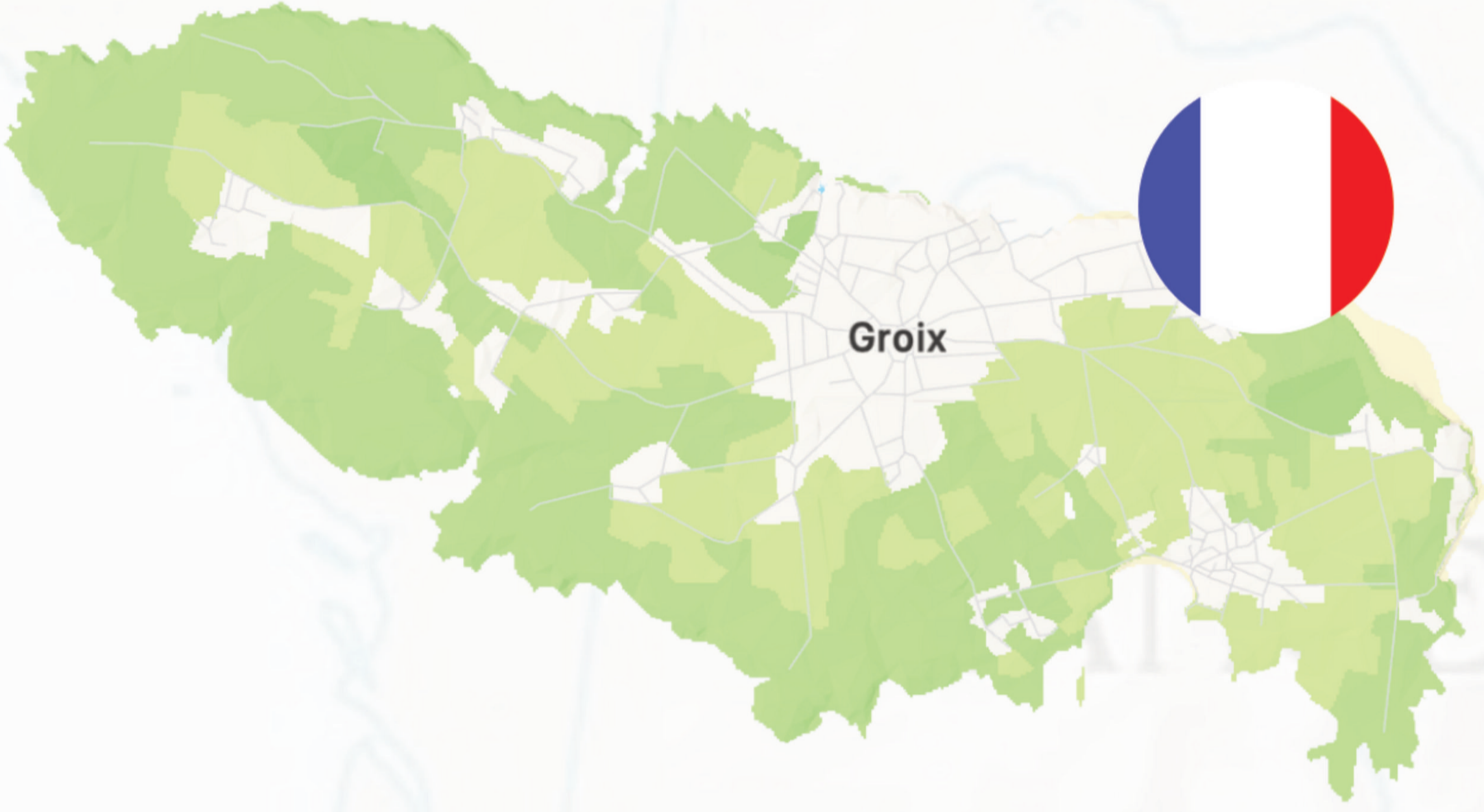
Koster, SE

POPULATION APX. 300

PART OF STRÖMSTAD MUNICIPALITY

DEMOGRAPHICS: LOW NUMBER OF PERMANENT RESIDENTS, AGING POPULATION
TOURISM SITUATION: DOMINATED BY SUMMER TOURISM, VERY QUIET DURING WINTER
MAIN SECTORS: TOURISM, FISHING, LOCAL FOOD

Land area: approx. 12 km²
(North & South Koster)



Groix, FR

POPULATION APX. 2,300

PART OF LORIENT MUNICIPALITY

DEMOGRAPHICS: AGING POPULATION, DECLINING NUMBER OF PERMANENT RESIDENTS
TOURISM SITUATION: SEASONAL TOURISM, FOCUS ON NATURE AND CULTURAL EXPERIENCES
MAIN SECTORS: FISHING, TOURISM, SMALL SCALE PRODUCTION

Land area: approx. 15 km²



Ouessant, FR

POPULATION APX. 850

LINKED TO LE CONQUET MUNICIPALITY - SPESIAL ISLAND STATUS

DEMOGRAPHICS: VERY SMALL AND AGING POPULATION, GEOGRAPHICALLY ISOLATED
TOURISM SITUATION: ISOLATED TOURISM, CHALLENGING LOGISTICS AND WEATHER
MAIN SECTORS: FISHING, TOURISM, PUBLIC SERVICES

Land area: approx. 16 km²