

The stories of the MANABAS Coast - Orne Estuary

Mid term Assessment Story

 **MANABAS COAST**
NATURE-BASED SOLUTIONS

MANABAS
COAST

Interreg
North Sea



Co-funded by
the European Union

Context for the pilot Orne Estuary

Landscape as a strategy for renaturation and adaptation of Caen to the sea in order to understand the estuary as a whole



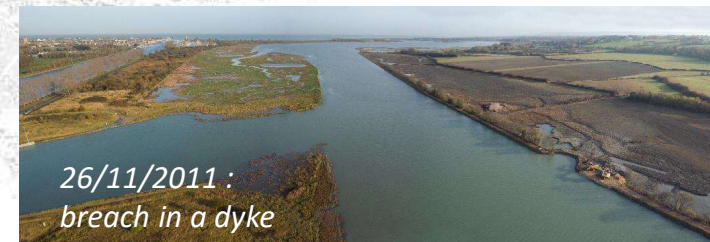
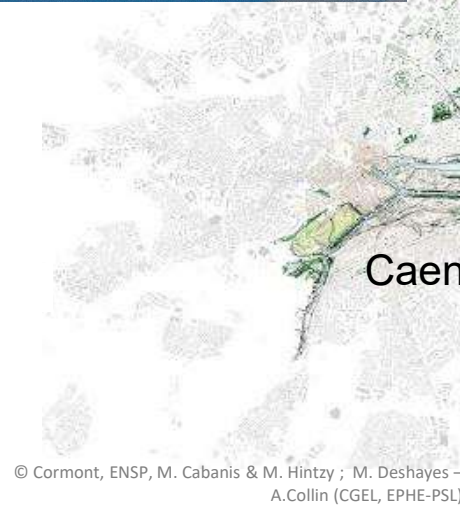
Pointe du Siège: public land ready to drive change in the short, medium, and long term

480 ha protected by Conservatoire du littoral

Potential sites of the mouth conducive to NBS - restoration of nature and salt marshes



Restoration work on estuarine ecosystems at the mouth of the estuary



The NBS opportunity

- **Natural system:** avoid the coastal squeeze

Social system: public participations based on methodology “ Engage-Deliberate-Decide » - Takes a collaborative approach to finding solutions, and focuses on deliberation with all members, including the local community, before a decision is made (landscape approach).

- **Governance system:** NBS integrated local coastline management strategies :

- Public land ownership by the Conservatoire, Port Authorities and local stakeholders
- Long-term strategy
- Broad consultation with key stakeholders



Overflow from the dyke of Pointe du Siege during high tide 11/03/2024



March 2024 site visit with public partners, site manager, and users

Problems: barriers to mainstreaming

- **Natural system:** Loss of freshwater wetlands.
- **Social system:** For many people, reconnecting these areas to the sea implies the loss of the current site, the loss of a familiar view, the loss of a routine. However change can be beneficial.
- **Governance system:** Converging public policies are one of the keys to taking action now.



Procedure for evacuating the polder following a sinkhole in the dike - coypu burrow (winter 2024 - work before high tides in march 2025)

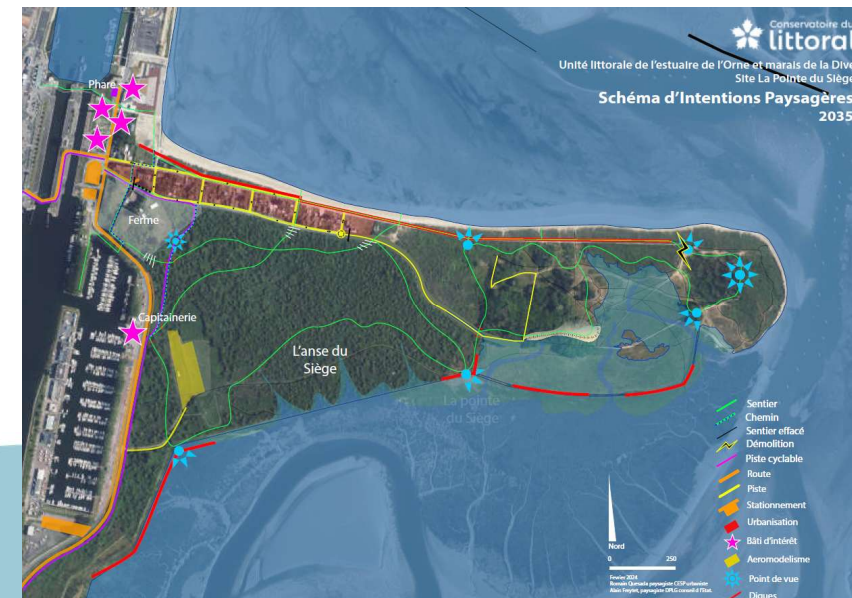
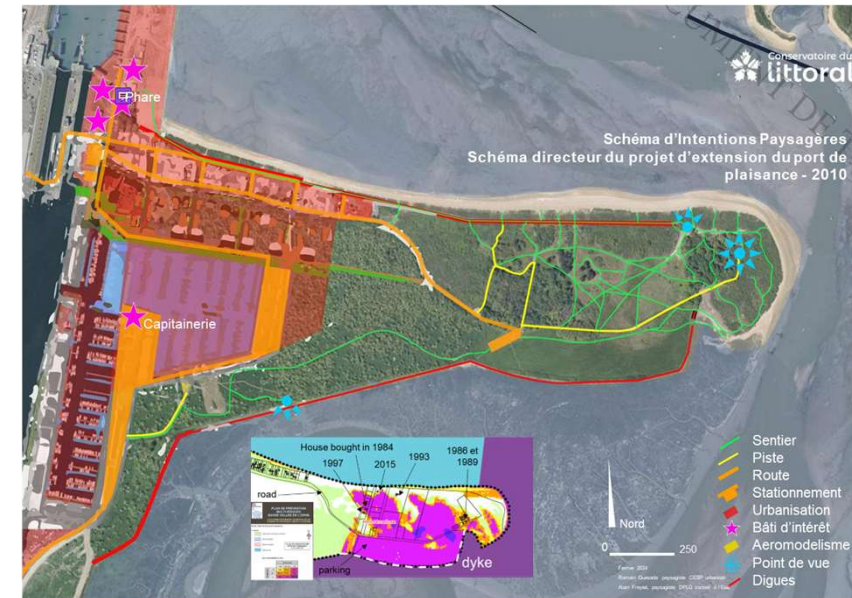
Solutions: mainstreaming actions

- **Natural system:** Development of a territory project : shared by coherent longshore drift

- **Social system:** Before obtaining permissions, the precious opportunity to make the project fit for local needs (farmers, sailing, hikers, wildlife watchers,...)

- **Governance system:** Integrate NBS into national and local strategic documents for a vision to 2050 and 2120* :
 - acquisition priority enables local authorities to buy back exposed property, with the aim of moving people away from risk areas and restoring the natural environment;
 - Mobilization of public land establishments to support local authorities in developing a land strategy (acquisition, renaturation and strategic retreat).

* French law on “spatial redevelopment linked to the coastline” (2021)

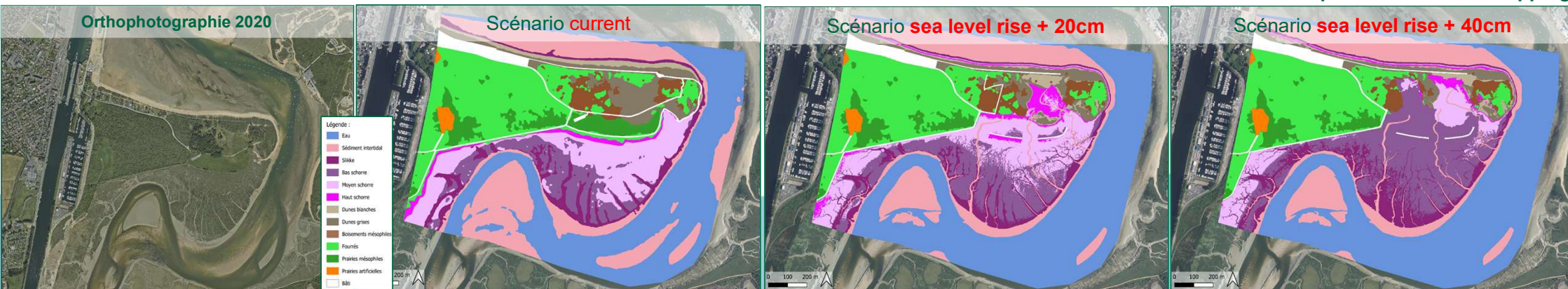


Progress to date (mid term)

- **Natural:** Fast growth of the typical saltmarsh vegetation and good development the associated fauna of the reconnected sites. Well in line with expected dynamics predicted by the Ecological Quality Indicator.
- **Social:** Good media coverage and better narratives. The NbS are known considered by local population and elected as a good alternative for adaptation (new projects in other sites). Studies with economic stakeholders of sites including farmers
- **Governance:** Integration of Nbs in local schemes. Good integration in risk reduction plans



Method for predicting the ecological potential of a coastal site in the context of reconnection to the sea - Current and predictive habitat mapping



Proof: results (successes) so far

Reveal the complementary nature of the different operators working towards a shared target: improve the resilience of natural, agricultural spaces in a context of climate change.

Understand the emotional attachment to the site felt by local inhabitants and propose alternative solutions to improve the lifestyle of inhabitants while allowing coastal ecosystems to return to their natural state.



Aproval of the landscape approach by stakeholders – 08/04/2025





Conservatoire du littoral

site naturel protégé

ESTUAIRE DE L'ORNE POINTE DU SIÈGE



Quistreham
River-Belle

Les prés salés sont primordiaux pour la reproduction et le développement des poissons à marée haute. À marée basse, ils sont des aires d'alimentation pour de nombreux oiseaux.

Le défi, d'ici 2035, est de réorganiser les usages pour restaurer ces milieux naturels estuariens afin qu'ils puissent s'adapter à l'élévation du niveau de la mer.

Pour préserver la quiétude des lieux et des animaux sauvages, la découverte du site naturel se fera à pied en réaménageant des stationnements existants autour du port de plaisance et des écluses. Ces derniers seront reliés à la plage par des axes sécurisés pour les piétons et les cyclistes. Enfin, des nouveaux belvédères permettront d'observer la transformation des paysages avec l'ouverture du site à la mer.

Schéma d'intentions paysagères 2035



- Sentier
- Chemin
- Sentier effacé
- Délimitation
- piste cyclable
- Route
- Plage
- Stationnement
- Urbanisation
- Usi d'habitat
- Aménagement
- Point de vue
- Digue

- 1 Renforcement de la quiétude du site, route accessible uniquement aux véhicules des services techniques et riverains, ensemble de l'espace naturel dédié aux piétons et à la biodiversité
- 2 Transfert du stationnement à l'entrée du site, optimisation des parkings au point de plaisance et au pied des écluses
- 3 Création d'un nouveau belvédère, remplissage des pierres de la digue
- 4 Ouverture de nouveaux sentiers piétons, sous le couvert des saunoux et accessible par grandes marées
- 5 Retour des prés salés, effacement du parking, profitage du terrain pour maîtriser l'entrée de la mer
- 6 Restauration de la dune, dépollution des sols
- 7 Effacement de sentiers par le retour de la mer
- 8 Sécurisation de l'accès entre la cale et le CANO, création de voie verte entre la capitainerie, le phare et la plage

Un site géré par


Avec le soutien financier de


Avec l'appui de


Merci de ne pas vous déloger des chemins pour respecter la tranquillité de tous et respecter les habitats et les espèces dans ce lieu de conservation.

Site réglementé par arrêté municipal du 28/07/2023
consultable sur [conservatoire.littoral.fr](#)

Impact: mainstreaming objective

Mainstreaming NBS on the coast based on natural dynamics, combining the reconnection of polders to the sea and the relocation of activities.

Normandy Region adopted a regional strategy, **to help local authorities draw up local strategies for sustainable management of the coastal strip**, involving the local population and socio-economic players, and working on the right geographical (coherent longshore drift) and temporal (2050 and 2100) scale.

Monitoring vegetation and arthropods after depoldering (thesis by Manuel Salgueiro-Simon, 06/12/2024)

